

**EXHIBIT A**  
**LPAO Database Data Layout**

**Lafayette Parish Assessor**

**LPAO Database and Data Layout**

**March 6, 2002**

**EXHIBIT A  
LPAO Database Data Layout**

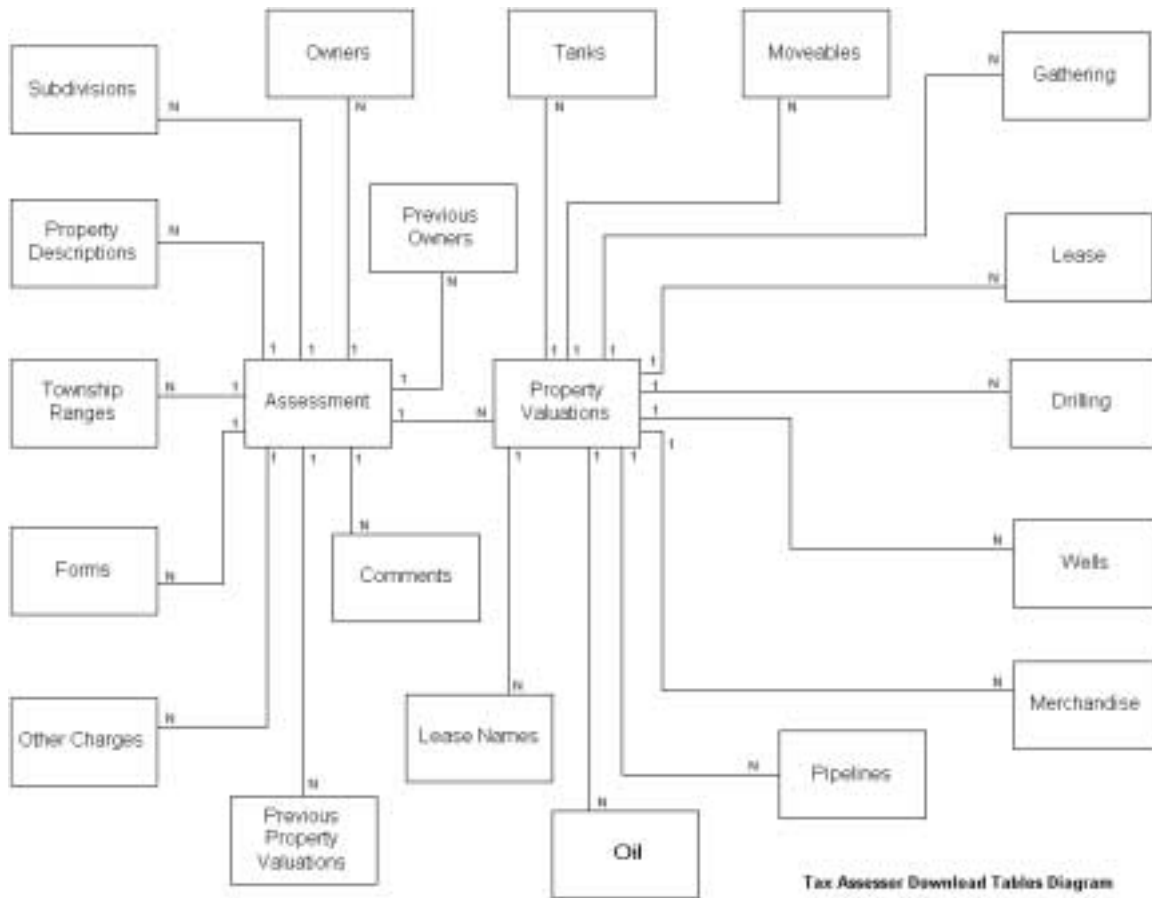
**Table Of Contents**

<b>Description and Diagram of Tables.....</b>	<b>3</b>
<b>Assessment Table .....</b>	<b>4</b>
<b>Owners Table .....</b>	<b>8</b>
<b>Subdivisions Table .....</b>	<b>9</b>
<b>Property Descriptions Table .....</b>	<b>10</b>
<b>Township Ranges Table .....</b>	<b>10</b>
<b>Form Table .....</b>	<b>11</b>
<b>Other Charges Table .....</b>	<b>11</b>
<b>Previous Property Valuations Table .....</b>	<b>12</b>
<b>Previous Owners Table.....</b>	<b>13</b>
<b>Comments Table .....</b>	<b>15</b>
<b>Property Valuations Table .....</b>	<b>16</b>
<b>Moveable Table .....</b>	<b>18</b>
<b>Gathering Table .....</b>	<b>19</b>
<b>Lease Table .....</b>	<b>20</b>
<b>Merchandise Table.....</b>	<b>21</b>
<b>Drilling Table .....</b>	<b>27</b>
<b>Pipelines Table .....</b>	<b>28</b>
<b>Wells Table .....</b>	<b>29</b>
<b>Tanks Table .....</b>	<b>30</b>
<b>Oil Table .....</b>	<b>31</b>
<b>Lease Name Table .....</b>	<b>32</b>
<b>Record Counts .....</b>	<b>33</b>

**EXHIBIT A**  
**LPAO Database Data Layout**

**TAX ASSESSOR DOWNLOAD DATA LAYOUTS**

The assessment data is in 1 main table (Assessment) with 1 to many relationships to 10 other tables. The 10 other tables are Owners, Subdivisions, Property Descriptions, Township Ranges, Forms, Other Charges, Previous Property Valuations, Previous Owners, Comments and Property Valuations. Property Valuations table has 1 to many relationships to 10 other tables. The 10 tables related to the Property Valuations table are Moveable, Gathering, Lease, Drilling, Wells, Merchandise, Pipelines, Oil, Tanks, and Lease Names. The relationships are defined in the diagram below with 'n' representing multiple occurrences of each record within a table.



**EXHIBIT A**  
**LPAO Database Data Layout**

The tables are defined as follows:

Table:           Assessment

Key:             Assessment Number

Length:         852

Fields:

<b>Field#</b>	<b>Name</b>	<b>Type</b>	<b>Length</b>	<b>Description</b>
1	AssessmentNo	Numeric	8	Assessment Number
	Delimiter	Alpha	1	Delimiter =
2	Ward	Alpha	4	Ward Number
	Delimiter	Alpha	1	Delimiter =
3	PropType	Alpha	1	Property Type. Ex. M = Moveable; R = Real Estate; T = Trailers; Etc.
	Delimiter	Alpha	1	Delimiter =
4	PurchaseDate	Numeric	6	Date of Purchase in format MMDDYY.
	Delimiter	Alpha	1	Delimiter =
5	PurchasePrice	Numeric	9	Purchase Price. Does not contain decimal or cents.
	Delimiter	Alpha	1	Delimiter =
6	RecordStatus <b>(not used)</b>	Alpha	1	Record Status
	Delimiter	Alpha	1	Delimiter =
7	PrevAssessmentNo	Alpha	8	Previous Assessment number used to cross reference when re- numbering occurs.
	Delimiter	Alpha	1	Delimiter =
8	BusPropOwnership <b>(not used)</b>	Alpha	1	Field will contain a 'Y' if property is owned by the owner of the business.
	Delimiter	Alpha	1	Delimiter =
9	SiteStreetIndexNo	Numeric	5	Street index number to the Street/Subdivision database.
	Delimiter	Alpha	1	Delimiter =
10	SiteStreetNo	Numeric	5	The property location address street number.
	Delimiter	Alpha	1	Delimiter =
11	SiteStreetName	Alpha	50	Property location address street name.
	Delimiter	Alpha	1	Delimiter =

**EXHIBIT A**  
**LPAO Database Data Layout**

<b>Field#</b>	<b>Name</b>	<b>Type</b>	<b>Length</b>	<b>Description</b>
12	SiteStreetNoSuffix	Alpha	5	Property location address street number suffix.
	Delimiter	Alpha	1	Delimiter =
13	TownCode	Numeric	2	Property location address town code. Ex: 01 = Duson; 02 = Broussard; 03 = Carencro; 04 = Lafayette; 05 = Scott; 06 = Youngsville; 88 = Parish; 77 = Parish Land in Ward "Corp".
	Delimiter	Alpha	1	Delimiter =
14	SiteZip	Numeric	5	Service zip code.
	Delimiter	Alpha	1	Delimiter =
15	SiteZip4	Numeric	4	Service zip code plus four.
	Delimiter	Alpha	1	Delimiter =
16	XCoord ( <b>not used</b> )	Alpha	1	Property base map x coordinate.
	Delimiter	Alpha	1	Delimiter =
17	YCoord ( <b>not used</b> )	Numeric	2	Property base map y coordinate.
	Delimiter	Alpha	1	Delimiter =
18	ValueChangeSwitch	Alpha	1	Valuation Change Switch. V = Property valuation changed.
	Delimiter	Alpha	1	Delimiter =
19	DowntownDevSwitch	Alpha	1	Downtown Development Switch. Y(Yes) or N(No) switch whether or not property is in the downtown development area.
	Delimiter	Alpha	1	Delimiter =
20	ReportYr	Numeric	4	Report Year is the last year the assessment reported its lat information (for moveable property only).
	Delimiter	Alpha	1	Delimiter =
21	ReassessSwitch	Alpha	1	Real Estate reassessment switch. Y(Yes) or N(No) switch whether or not real estate property as been reassessed.
	Delimiter	Alpha	1	Delimiter =
22	SaleType	Alpha	1	Sale type. V = Vacant land sales; I = Improved property sales.
	Delimiter	Alpha	1	Delimiter =
23	BusType	Numeric	4	Business type (for moveable property)
	Delimiter	Alpha	1	Delimiter =
24	PrevAssessAmt	Numeric	9	Previous assessment amount without decimal and cents.

**EXHIBIT A**  
**LPAO Database Data Layout**

Field#	Name	Type	Length	Description
	Delimiter	Alpha	1	Delimiter =
25	NotifySwitch	Alpha	1	Notification switch
	Delimiter	Alpha	1	Delimiter =
26	CommercialSwitch	Alpha	1	Commercial switch. Y = Yes, if used for commercial purposes
	Delimiter	Alpha	1	Delimiter =
27	MailZip	Numeric	5	Mailing address zip code.
	Delimiter	Alpha	1	Delimiter =
28	MailZip4	Numeric	4	Mailing address zip plus four code.
	Delimiter	Alpha	1	Delimiter =
29	MailAdd1	Alpha	35	First mailing address line.
	Delimiter	Alpha	1	Delimiter =
30	MailAdd2	Alpha	35	Second mailing address line.
	Delimiter	Alpha	1	Delimiter =
31	MailAdd3	Alpha	35	Third mailing address line.
	Delimiter	Alpha	1	Delimiter =
32	MailAdd4	Alpha	35	Fourth mailing address line.
	Delimiter	Alpha	1	Delimiter =
33	MailAdd5	Alpha	35	Fifth mailing address line.
	Delimiter	Alpha	1	Delimiter =
34	MailAdd6	Alpha	35	Sixth mailing address line.
	Delimiter	Alpha	1	Delimiter =
35	MailAdd7	Alpha	35	Seventh mailing address line.
	Delimiter	Alpha	1	Delimiter =
36	MailAdd8	Alpha	35	Eighth mailing address line.
	Delimiter	Alpha	1	Delimiter =
37	MailAdd9	Alpha	35	Ninth mailing address line.
	Delimiter	Alpha	1	Delimiter =
38	MailAdd10	Alpha	35	Tenth mailing address line.
	Delimiter	Alpha	1	Delimiter =
39	SubdivName	Alpha	1	Subdivision name (only if no subdivision table entries).
	Delimiter	Alpha	1	Delimiter =
40	Conveyance1	Numeric	9	First account number
	Delimiter	Alpha	1	Delimiter =
41	Conveyance2	Numeric	9	Second account number
	Delimiter	Alpha	1	Delimiter =
42	Conveyance3	Numeric	9	Third account number
	Delimiter	Alpha	1	Delimiter =
43	Conveyance4	Numeric	9	Fourth account number
	Delimiter	Alpha	1	Delimiter =
44	Conveyance5	Numeric	9	Fifth account number
	Delimiter	Alpha	1	Delimiter =

**EXHIBIT A**  
**LPAO Database Data Layout**

<b>Field#</b>	<b>Name</b>	<b>Type</b>	<b>Length</b>	<b>Description</b>
45	Conveyance6	Numeric	9	Sixth account number
	Delimiter	Alpha	1	Delimiter =
46	Conveyance7	Numeric	9	Seventh account number
	Delimiter	Alpha	1	Delimiter =
47	Conveyance8	Numeric	9	Eighth account number
	Delimiter	Alpha	1	Delimiter =
48	Conveyance9	Numeric	9	Ninth account number
	Delimiter	Alpha	1	Delimiter =
49	Conveyance10	Numeric	9	Tenth account number
	Delimiter	Alpha	1	Delimiter =
50	Conveyance11	Numeric	9	Eleventh account number
	Delimiter	Alpha	1	Delimiter =
51	Conveyance12	Numeric	9	Twelfth account number
	Delimiter	Alpha	1	Delimiter =
52	Conveyance13	Numeric	9	Thirteenth account number
	Delimiter	Alpha	1	Delimiter =
53	Conveyance14	Numeric	9	Fourteenth account number
	Delimiter	Alpha	1	Delimiter =
54	Conveyance15	Numeric	9	Fifteenth account number
	Delimiter	Alpha	1	Delimiter =
55	Conveyance16	Numeric	9	Sixteenth account number
	Delimiter	Alpha	1	Delimiter =
56	Conveyance17	Numeric	9	Seventeenth account number
	Delimiter	Alpha	1	Delimiter =
57	Conveyance18	Numeric	9	Eighteenth account number
	Delimiter	Alpha	1	Delimiter =
58	Conveyance19	Numeric	9	Nineteenth account number
	Delimiter	Alpha	1	Delimiter =
59	Conveyance20	Numeric	9	Twentieth account number
	Delimiter	Alpha	1	Delimiter =
60	AssessAmt	Numeric	9	Assessment amount without decimal and cents.
	Delimiter	Alpha	1	Delimiter =
61	HomestdExemptAmt	Numeric	7	Homestead Exemption without decimal and cents.
	Delimiter	Alpha	1	Delimiter =
62	ParishTaxDue	Numeric	7.2	Parish tax amount due with decimal and cents.
	Delimiter	Alpha	1	Delimiter =
63	ParishTaxTot	Numeric	7.2	Parish total amount due with decimal and cents.
	Delimiter	Alpha	1	Delimiter =
64	CityTaxDue	Numeric	7.2	City tax amount due with decimal and cents.

**EXHIBIT A**  
**LPAO Database Data Layout**

Field#	Name	Type	Length	Description
	Delimiter	Alpha	1	Delimiter =
65	CityTaxTot	Numeric	7.2	City total amount due with decimal and cents.
	Delimiter	Alpha	1	Delimiter =
66	SpecTaxCode1	Alpha	2	First special tax code. 01=DDA
	Delimiter	Alpha	1	Delimiter =
67	SpecTaxCode2 <b>(not used)</b>	Alpha	2	Second special tax code.
	Delimiter	Alpha	1	Delimiter =
68	SpecTaxCode3 <b>(not used)</b>	Alpha	2	Third special tax code.
	Delimiter	Alpha	1	Delimiter =
69	SpecTaxCode4 <b>(not used)</b>	Alpha	2	Fourth special tax code.
	Delimiter	Alpha	1	Delimiter =
70	SpecTaxCode5 <b>(not used)</b>	Alpha	2	Fifth special tax code.
	Delimiter	Alpha	1	Delimiter =
71	SpecTaxCode6 <b>(not used)</b>	Alpha	2	Sixth special tax code.

Table: Owners

Key: Assessment Number and Owner Line Number

Length: 47

Relation: Related to Assessment Table with Assessment Number

Fields:

Field#	Name	Type	Length	Description
1	AssessmentNo	Numeric	8	Assessment Number from the Assessment Table connecting this owner.
	Delimiter	Alpha	1	Delimiter =
2	OwnerLineNo	Numeric	2	The line number or occurrence of each owner of an assessment. This occurrence usually starts with and is incremented by 5.
	Delimiter	Alpha	1	Delimiter =
3	OwnerName	Alpha	35	Owners name

**EXHIBIT A**  
**LPAO Database Data Layout**

Table: Subdivision

Key: Assessment Number and Subdivision Line Number

Length: 83

Relation: Related to Assessment Table with Assessment Number

Fields:

Field#	Name	Type	Length	Description
1	AssessmentNo	Numeric	8	Assessment Number from the Assessment Table connecting this subdivision.
	Delimiter	Alpha	1	Delimiter =
2	SubdivLineNo	Numeric	2	The line number or occurrence of each subdivision of an assessment. Line number starts with and is incremented by 1.
	Delimiter	Alpha	1	Delimiter =
3	SubdivIndexNo	Numeric	5	The subdivision index number to the Street/Subdivision database.
	Delimiter	Alpha	1	Delimiter =
4	SubdivName	Alpha	50	The subdivision name associated with the subdivision index number of the Street/Subdivision database.
	Delimiter	Alpha	1	Delimiter =
5	BlockNo	Alpha	5	The block number of the subdivision.
	Delimiter	Alpha	1	Delimiter =
6	LotNo	Alpha	5	The lot number of the property in the subdivision.
	Delimiter	Alpha	1	Delimiter =
7	TownCode	Numeric	2	The town code of the subdivision.

**EXHIBIT A**  
**LPAO Database Data Layout**

Table: Property Descriptions

Key: Assessment Number and Property Description Line Number

Length: 48

Relation: Related to Assessment Table with Assessment Number

Fields:

Field#	Name	Type	Length	Description
1	AssessmentNo	Numeric	8	Assessment Number from the Assessment Table connecting this property description.
	Delimiter	Alpha	1	Delimiter =
3	PropDescLineNo	Numeric	2	The line number or occurrence of each property description of an assessment. This occurrence starts with and is incremented by 10.
	Delimiter	Alpha	1	Delimiter =
4	PropDescription	Alpha	35	Property description

Table: Township Ranges

Key: Assessment Number and Line Number

Length: 21

Relation: Related to Assessment Table with Assessment Number

Fields:

Field#	Name	Type	Length	Description
1	AssessmentNo	Numeric	8	Assessment Number from the Assessment Table connecting this town range.
	Delimiter	Alpha	1	Delimiter =
2	TRSLineNo	Numeric	2	The line number or occurrence of each town range of an assessment. This number starts with and is increased by 1.
	Delimiter	Alpha	1	Delimiter =
3	TownshipNo	Numeric	2	Township number. Ex. 08, 09, 10
	Delimiter	Alpha	1	Delimiter =

**EXHIBIT A**  
**LPAO Database Data Layout**

Field#	Name	Type	Length	Description
4	RangeNo	Numeric	2	Range number of township. Ex. for township 08, ranges are 03, 04 and 05.
	Delimiter	Alpha	1	Delimiter =
5	SectionNo	Numeric	3	Section number if property covers more than one section.

Table: Form (**TABLE IS NO LONGER USED**)  
 Key: Assessment Number and Line Number  
 Length: 23  
 Relation: Related to Assessment Table with Assessment Number  
 Fields:

Field#	Name	Type	Length	Description
1	AssessmentNo	Numeric	8	Assessment Number from the Assessment Table connecting this form.
	Delimiter	Alpha	1	Delimiter =
2	FormLineNo	Numeric	2	The line number or occurrence of each form of an assessment. This occurrence usually starts with and is incremented by 1.
	Delimiter	Alpha	1	Delimiter =
3	FormNo	Numeric	11	Form number

Table: Other Charges  
 Key: Assessment Number and Line Number  
 Length: 37  
 Relation: Related to Assessment Table with Assessment Number  
 Fields:

Field#	Name	Type	Length	Description
1	AssessmentNo	Numeric	8	Assessment Number from the Assessment Table connecting these other charges.
	Delimiter	Alpha	1	Delimiter =

**EXHIBIT A**  
**LPAO Database Data Layout**

Field#	Name	Type	Length	Description
2	OthChrgLineNo	Numeric	2	The line number or occurrence of each additional charge of an assessment. This occurrence usually starts with and is incremented by 1.
	Delimiter	Alpha	1	Delimiter =
3	ChargeOwnership	Numeric	2	Ownership. 01 = Duson; 02 = Broussard; 03 = Carencro; 04 = Lafayette; 05 = Scott; 06 = Youngsville; 99 = Tax Assessor; 88 = Sheriff (Parish).
	Delimiter	Alpha	1	Delimiter =
4	ChargeCode	Alpha	1	Other charge code. D = Drainage; G = Grass Cutting; L = LTC Fee.
	Delimiter	Alpha	1	Delimiter =
5	DateOfChrg	Numeric	6	Date of other charge in format MMDDYY.
	Delimiter	Alpha	1	Delimiter =
6	ChargeAmt	Numeric	7.2	The charge amount with decimal and cents.
	Delimiter	Alpha	1	Delimiter =
7	ValueCode	Alpha	2	Other valuation code.

Table: Previous Property Valuation

Key: Assessment Number and Previous Valuation Line Number

Length: 48

Relation: Related to Assessment Table with Assessment Number

Fields:

Field#	Name	Type	Length	Description
1	AssessmentNo	Numeric	8	Assessment Number from the Assessment Table connecting this previous property valuation.
	Delimiter	Alpha	1	Delimiter =
2	PrevValueLineNo	Numeric	2	The line number or occurrence of each previous property valuation of an assessment. This occurrence usually starts with and is incremented by 5.
	Delimiter	Alpha	1	Delimiter =

**EXHIBIT A**  
**LPAO Database Data Layout**

<b>Field#</b>	<b>Name</b>	<b>Type</b>	<b>Length</b>	<b>Description</b>
3	PrevValueCode	Alpha	2	Previous property valuation code.
	Delimiter	Alpha	1	Delimiter =
4	PrevUnitsAcres	Numeric	7.2	Previous number of property units or acres with decimal and 2 positions behind decimal.
	Delimiter	Alpha	1	Delimiter =
5	PrevValueAmt	Numeric	9	Previous property valuation amount without decimal and cents.
	Delimiter	Alpha	1	Delimiter =
6	PrevHomesteadExemptAmt	Numeric	7	Previous property homestead exemption amount without decimal and cents.
	Delimiter	Alpha	1	Delimiter =
7	PrevValTaxYr	Numeric	4	Previous tax year

Table: Previous Owner

Key: Assessment Number and Line Number

Length: 365

Relation: Related to Assessment Table with Assessment Number

Fields:

<b>Field#</b>	<b>Name</b>	<b>Type</b>	<b>Length</b>	<b>Description</b>
1	AssessmentNo	Numeric	8	Assessment Number from the Assessment Table connecting this previous owner.
	Delimiter	Alpha	1	Delimiter =
2	PrevOwnLineNo	Numeric	2	The line number or occurrence of each previous owner of an assessment. This occurrence starts with and is incremented by 1.
	Delimiter	Alpha	1	Delimiter =
3	PrevOwnerLine1	Alpha	35	Previous property owner's name, first line.
	Delimiter	Alpha	1	Delimiter =
4	PrevOwnerLine2	Alpha	35	Previous property owner's name, second line.
	Delimiter	Alpha	1	Delimiter =

**EXHIBIT A**  
**LPAO Database Data Layout**

<b>Field#</b>	<b>Name</b>	<b>Type</b>	<b>Length</b>	<b>Description</b>
5	PurchaseDate	Numeric	6	Date of property purchase in the format MMDDYY.
	Delimiter	Alpha	1	Delimiter =
6	PurchasePrice	Numeric	9	Purchase price without decimal and cents.
	Delimiter	Alpha	1	Delimiter =
7	NumberUnits/Acres	Numeric	7.2	Number of units/acres/lots in sale with decimal and 2 digits behind the decimal.
	Delimiter	Alpha	1	Delimiter =
8	ValueCodeSold1	Alpha	2	First type of property sold. Same as property valuation types.
	Delimiter	Alpha	1	Delimiter =
9	ValueCodeSold2	Alpha	2	Second type of property sold. Same as property valuation types.
	Delimiter	Alpha	1	Delimiter =
10	ValueCodeSold3	Alpha	2	Third type of property sold. Same as property valuation types.
	Delimiter	Alpha	1	Delimiter =
11	ValueCodeSold4	Alpha	2	Fourth type of property sold. Same as property valuation types.
	Delimiter	Alpha	1	Delimiter =
12	ValueCodeSold5	Alpha	2	Fifth type of property sold. Same as property valuation types.
	Delimiter	Alpha	1	Delimiter =
13	OldAssessmentNo	Alpha	8	Assessment number used in old numbering system.
	Delimiter	Alpha	1	Delimiter =
14	PrevConveyance1	Numeric	9	First previous conveyance number.
	Delimiter	Alpha	1	Delimiter =
15	PrevSalesComment1	Alpha	35	First previous property comments about the sale.
	Delimiter	Alpha	1	Delimiter =
16	PrevConveyance2	Numeric	9	Second previous Conveyance number.
	Delimiter	Alpha	1	Delimiter =
17	PrevSalesComment2	Alpha	35	Second previous property comments about the sale.
	Delimiter	Alpha	1	Delimiter =
18	PrevConveyance3	Numeric	9	Third previous Conveyance number.
	Delimiter	Alpha	1	Delimiter =
19	PrevSalesComment3	Alpha	35	Third previous property comments about the sale.

**EXHIBIT A**  
**LPAO Database Data Layout**

Field#	Name	Type	Length	Description
	Delimiter	Alpha	1	Delimiter =
20	PrevConveyance4	Numeric	9	Fourth previous Conveyance number.
	Delimiter	Alpha	1	Delimiter =
21	PrevSalesComment4	Alpha	35	Fourth previous property comments about the sale.
	Delimiter	Alpha	1	Delimiter =
22	PrevConveyance5	Numeric	9	Fifth previous Conveyance number.
	Delimiter	Alpha	1	Delimiter =
23	PrevSalesComment5	Alpha	35	Fifth previous property comments about the sale.

Table:           Comments

Key:             Assessment Number, Ownership and Line Number

Length:         50

Relation:       Related to Assessment Table with Assessment Number

Fields:

Field#	Name	Type	Length	Description
1	AssessmentNo	Numeric	8	Assessment Number from the Assessment Table connecting this comment.
	Delimiter	Alpha	1	Delimiter =
2	CommentsOwner	Numeric	2	Comment ownership. 01 = Duson; 02 = Broussard; 03 = Carencro; 04 = Lafayette; 05 = Scott; 06 = Youngsville; 99 = Parish Tax Assessor; 88 = Sheriff
	Delimiter	Alpha	1	Delimiter =
3	CommentsLineNo	Numeric	2	The line number or occurrence of each comment of an assessment. This occurrence usually starts with and is incremented by 1.
	Delimiter	Alpha	1	Delimiter =
4	CurrentComments	Alpha	35	Comment on the account.

**EXHIBIT A**  
**LPAO Database Data Layout**

Table: Property Valuation

Key: Assessment Number and Valuation Line Number

Length: 184

Relation: Related to Assessment Table with Assessment Number

Fields:

Field#	Name	Type	Length	Description
1	AssessmentNo	Numeric	8	Assessment Number from the Assessment Table connecting this property valuation.
	Delimiter	Alpha	1	Delimiter =
2	CurrentValueLineNo	Numeric	2	The occurrence of the property valuation of an assessment. The occurrence starts with and is incremented by 5.
	Delimiter	Alpha	1	Delimiter =
3	CurrentValueCode	Alpha	2	The property valuation code. Ex. A1, A2, AT, AR, CI, ML, DR, GW, OW.
	Delimiter	Alpha	1	Delimiter =
4	CurrentValUnits/Acres	Numeric	7.2	The amount of units or acres with decimal and 2 digits behind the decimal.
	Delimiter	Alpha	1	Delimiter =
5	CurrentValueAmt	Numeric	9	The value amount of the property without decimal and cents.
	Delimiter	Alpha	1	Delimiter =
6	CurrentHomestdExempt Amt	Numeric	7	The amount of homestead exemption without decimal and cents.
	Delimiter	Alpha	1	Delimiter =
7	PrevYrValueAmt	Numeric	9	The running total of all the moveable detailed property without decimal and cents. This figure is not rounded.
	Delimiter	Alpha	1	Delimiter =
8	OriginMoveableCost	Numeric	10	The original moveable property cost without decimal and cents.

**EXHIBIT A**  
**LPAO Database Data Layout**

Field#	Name	Type	Length	Description
	Delimiter	Alpha	1	Delimiter =
9	SecByRealEstLA	Numeric	9	The total secured by recorded mortgages on real estate in La without decimal and cents.
	Delimiter	Alpha	1	Delimiter =
10	SecByChattelLAProp	Numeric	9	The total secured by recorded chattel mortgages on property in La without decimal and cents.
	Delimiter	Alpha	1	Delimiter =
11	SecByMortPropNotLA	Numeric	9	The total secured by mortgages on property not in La without decimal and cents.
	Delimiter	Alpha	1	Delimiter =
12	SecByOthPerPropEncum	Numeric	9	The total secured by other encumbrance of personal property without decimal and cents.
	Delimiter	Alpha	1	Delimiter =
13	SecByPerEndorse	Numeric	9	The total secured by personal endorsements without decimal and cents.
	Delimiter	Alpha	1	Delimiter =
14	SignatureLoans	Numeric	9	The total signature loans without decimal and cents.
	Delimiter	Alpha	1	Delimiter =
15	NotePayOthNotSecByChatMort	Numeric	9	Notes payable to others not secured by chattel mortgage without decimal and cents.
	Delimiter	Alpha	1	Delimiter =
16	NotePayBankNotSecByChatMort	Numeric	9	Notes payable to banks not secured by chattel mortgage without decimal and cents.
	Delimiter	Alpha	1	Delimiter =
17	MortIndebtBanksOth	Numeric	9	Mortgage indebt to banks and others without decimal and cents.
	Delimiter	Alpha	1	Delimiter =
18	NotePayOthFinCo	Numeric	9	Notes payable to other finance companies without decimal and cents.
	Delimiter	Alpha	1	Delimiter =

**EXHIBIT A**  
**LPAO Database Data Layout**

Field#	Name	Type	Length	Description
19	NotePayAlliesSubsidCo	Numeric	9	Notes payable to allies and subsidiary companies without decimal and cents.
	Delimiter	Alpha	1	Delimiter =
20	MoveAssessValue	Numeric	9	Assessed value without value and cents.

Table: Moveable

Key: Assessment Number, Valuation Line Number and Sequence Number

Length: 80

Relation: Related to the Property Valuation Table with Assessment Number and Valuation Line Number

Fields:

Field#	Name	Type	Length	Description
1	AssessmentNo	Numeric	8	Assessment Number from the Property Valuation Table.
	Delimiter	Alpha	1	Delimiter =
2	MoveValueLineNo	Numeric	2	The Valuation Line Number from the Property Valuation Table.
	Delimiter	Alpha	1	Delimiter =
3	MoveSequenceNo	Numeric	4	The sequence number of the occurrence of the moveable within the Property Valuation.
	Delimiter	Alpha	1	Delimiter =
4	EquipmentCode	Numeric	5	Moveable Code
	Delimiter	Alpha	1	Delimiter =
5	AircraftRegisNo	Alpha	15	Serial number of aircraft.
	Delimiter	Alpha	1	Delimiter =
6	MoveYrPurchase	Numeric	4	Year of moveable.
	Delimiter	Alpha	1	Delimiter =
7	MoveOrigCost	Numeric	10	Original cost of moveable without decimal and cents.
	Delimiter	Alpha	1	Delimiter =
8	MoveAssdValue	Numeric	9	Assessed value of moveable without decimal and cents.
	Delimiter	Alpha	1	Delimiter =
9	MoveOrigAssdValue	Numeric	9	The original assessed amount of moveable without decimal and cents.

**EXHIBIT A**  
**LPAO Database Data Layout**

Field#	Name	Type	Length	Description
	Delimiter	Alpha	1	Delimiter =
10	MoveObsolescence	Alpha	1	Obsolescence awarded. Y = Yes; N = No.
	Delimiter	Alpha	1	Delimiter =
11	MoveObsolescPercent	Numeric	.2	The obsolescence percent with decimal and 2 positions behind decimal.

Table: Gathering (these are small pipelines used primarily by the oil & gas industry)

Key: Assessment Number, Valuation Line Number and Sequence Number

Length: 58

Relation: Related to Property Valuation Table with Assessment Number and Valuation Line Number

Fields:

Field#	Name	Type	Length	Description
1	AssessmentNo	Numeric	8	Assessment Number from the Property Valuation Table.
	Delimiter	Alpha	1	Delimiter =
2	GatherValueLineNo	Numeric	2	The Gathering Line Number on this table.
	Delimiter	Alpha	1	Delimiter =
3	GatherSequenceNo	Numeric	4	The sequence number of the occurrence of the gathering line within the Property Valuation.
	Delimiter	Alpha	1	Delimiter =
4	GatherSize	Numeric	3	Size of gathering line.
	Delimiter	Alpha	1	Delimiter =
5	GatherYr	Numeric	4	Year of gathering line.
	Delimiter	Alpha	1	Delimiter =
6	GatherMiles	Numeric	3.2	Miles of gathering line with decimal and 2 digits behind the decimal.
	Delimiter	Alpha	1	Delimiter =
7	GatherAssdValue	Numeric	9	Assessed value of gathering line without decimal and cents.
	Delimiter	Alpha	1	Delimiter =
8	GatherOrigAssdValue	Numeric	9	Original assessed amount of gathering line without decimal and cents.
	Delimiter	Alpha	1	Delimiter =

**EXHIBIT A**  
**LPAO Database Data Layout**

Field#	Name	Type	Length	Description
9	GatherObsolescence	Alpha	1	Obsolescence awarded for gather lines. Y = Yes; N = No.
	Delimiter	Alpha	1	Delimiter =
10	GatherObsolescPercent	Numeric	.2	The obsolescence percent for gather lines with decimal and 2 positions behind decimal.

Table: Lease

Key: Assessment Number, Valuation Line Number and Sequence Number

Length: 89

Relation: Related to Property Valuation Table with Assessment Number and Valuation Line Number

Fields:

Field#	Name	Type	Length	Description
1	AssessmentNo	Numeric	8	Assessment Number from the Property Valuation Table.
	Delimiter	Alpha	1	Delimiter =
2	LeaseValueLineNo	Numeric	2	The Valuation Line Number from the Property Valuation Table.
	Delimiter	Alpha	1	Delimiter =
3	LeaseSequenceNo	Numeric	4	The sequence number of the occurrence of the lease within the Property Valuation.
	Delimiter	Alpha	1	Delimiter =
4	LeaseAnnualValue	Numeric	10	Annual value of lease without decimal and cents.
	Delimiter	Alpha	1	Delimiter =
5	LeaseAssdValue	Numeric	9	Assessed value of lease without decimal and cents.
	Delimiter	Alpha	1	Delimiter =
6	LeaseOrigAssdValue	Numeric	9	Original assessed value of lease without decimal and cents.
	Delimiter	Alpha	1	Delimiter =
7	LesseeName	Alpha	35	Name of lessee.
	Delimiter	Alpha	1	Delimiter =
8	LeaseObsolescence	Alpha	1	Obsolescence awarded to lease. Y = Yes; N = No.
	Delimiter	Alpha	1	Delimiter =

**EXHIBIT A**  
**LPAO Database Data Layout**

<b>Field#</b>	<b>Name</b>	<b>Type</b>	<b>Length</b>	<b>Description</b>
9	LeaseObsolescPercent	Numeric	.2	The lease obsolescence percent with decimal and 2 positions behind decimal.

Table: Merchandise

Key: Assessment Number, Valuation Line Number and Sequence Number

Length: 882

Relation: Related to Property Valuation Table with Assessment Number and Valuation Line Number

Fields:

<b>Field#</b>	<b>Name</b>	<b>Type</b>	<b>Length</b>	<b>Description</b>
1	AssessmentNo	Numeric	8	Assessment Number from the Property Valuation Table.
	Delimiter	Alpha	1	Delimiter =
2	InventValueLineNo	Numeric	2	The Valuation Line Number from the Property Valuation Table.
	Delimiter	Alpha	1	Delimiter =
3	InventSequence No	Numeric	4	The sequence number of the occurrence of the merchandise within the Property Valuation.
	Delimiter	Alpha	1	Delimiter =
4	InventAssdValue	Numeric	9	Assessed value of merchandise without decimal and cents.
	Delimiter	Alpha	1	Delimiter =
5	InventOrigAssdValue	Numeric	9	Original assessed value of merchandise without decimal and cents.
	Delimiter	Alpha	1	Delimiter =
6	InventObsolescence	Alpha	1	Obsolescence awarded. Y = Yes; N = No.
	Delimiter	Alpha	1	Delimiter =
7	InventObsolescPercent	Numeric	.2	The obsolescence percent with decimal and 2 positions behind decimal.
	Delimiter	Alpha	1	Delimiter =
8	MerchandiseAmt1	Numeric	9	First merchandise amount without decimal and cents.
	Delimiter	Alpha	1	Delimiter =

**EXHIBIT A**  
**LPAO Database Data Layout**

<b>Field#</b>	<b>Name</b>	<b>Type</b>	<b>Length</b>	<b>Description</b>
9	RawMaterialAmt1	Numeric	9	First raw material amount without decimal and cents.
	Delimiter	Alpha	1	Delimiter =
10	WorkInProcAmt1	Numeric	9	First work in process amount without decimal and cents.
	Delimiter	Alpha	1	Delimiter =
11	FinishGoods1	Numeric	9	First finished goods amount without decimal and cents.
	Delimiter	Alpha	1	Delimiter =
12	SuppliesAmt1	Numeric	9	First supplies amount without decimal and cents.
	Delimiter	Alpha	1	Delimiter =
13	UsedCars1	Numeric	9	First used car amount without decimal and cents.
	Delimiter	Alpha	1	Delimiter =
14	PartsSupplies1	Numeric	9	First parts supplies amount without decimal and cents.
	Delimiter	Alpha	1	Delimiter =
15	MerchandiseAmt2	Numeric	9	Second merchandise amount without decimal and cents.
	Delimiter	Alpha	1	Delimiter =
16	RawMaterialAmt2	Numeric	9	Second raw material amount without decimal and cents.
	Delimiter	Alpha	1	Delimiter =
17	WorkInProcAmt2	Numeric	9	Second work in process amount without decimal and cents.
	Delimiter	Alpha	1	Delimiter =
18	FinishGoods2	Numeric	9	Second finished goods amount without decimal and cents.
	Delimiter	Alpha	1	Delimiter =
19	SuppliesAmt2	Numeric	9	Second supplies amount without decimal and cents.
	Delimiter	Alpha	1	Delimiter =
20	UsedCars2	Numeric	9	Second used car amount without decimal and cents.
	Delimiter	Alpha	1	Delimiter =
21	PartsSupplies2	Numeric	9	Second parts supplies amount without decimal and cents.
	Delimiter	Alpha	1	Delimiter =
22	MerchandiseAmt3	Numeric	9	Third merchandise amount without decimal and cents.
	Delimiter	Alpha	1	Delimiter =
23	RawMaterialAmt3	Numeric	9	Third raw material amount without decimal and cents.

**EXHIBIT A**  
**LPAO Database Data Layout**

Field#	Name	Type	Length	Description
	Delimiter	Alpha	1	Delimiter =
24	WorkInProcAmt3	Numeric	9	Third work in process amount without decimal and cents.
	Delimiter	Alpha	1	Delimiter =
25	FinishGoods3	Numeric	9	Third finished goods amount without decimal and cents.
	Delimiter	Alpha	1	Delimiter =
26	SuppliesAmt3	Numeric	9	Third supplies amount without decimal and cents.
	Delimiter	Alpha	1	Delimiter =
27	UsedCars3	Numeric	9	Third used car amount without decimal and cents.
	Delimiter	Alpha	1	Delimiter =
28	PartsSupplies3	Numeric	9	Third parts supplies amount without decimal and cents.
	Delimiter	Alpha	1	Delimiter =
29	MerchandiseAmt4	Numeric	9	Fourth merchandise amount without decimal and cents.
	Delimiter	Alpha	1	Delimiter =
30	RawMaterialAmt4	Numeric	9	Fourth raw material amount without decimal and cents.
	Delimiter	Alpha	1	Delimiter =
31	WorkInProcAmt4	Numeric	9	Fourth work in process amount without decimal and cents.
	Delimiter	Alpha	1	Delimiter =
32	FinishGoods4	Numeric	9	Fourth finished goods amount without decimal and cents.
	Delimiter	Alpha	1	Delimiter =
33	SuppliesAmt4	Numeric	9	Fourth supplies amount without decimal and cents.
	Delimiter	Alpha	1	Delimiter =
34	UsedCars4	Numeric	9	Fourth used car amount without decimal and cents.
	Delimiter	Alpha	1	Delimiter =
35	PartsSupplies4	Numeric	9	Fourth parts supplies amount without decimal and cents.
	Delimiter	Alpha	1	Delimiter =
36	MerchandiseAmt5	Numeric	9	Fifth merchandise amount without decimal and cents.
	Delimiter	Alpha	1	Delimiter =
37	RawMaterialAmt5	Numeric	9	Fifth raw material amount without decimal and cents.
	Delimiter	Alpha	1	Delimiter =

**EXHIBIT A**  
**LPAO Database Data Layout**

<b>Field#</b>	<b>Name</b>	<b>Type</b>	<b>Length</b>	<b>Description</b>
38	WorkInProcAmt5	Numeric	9	Fifth work in process amount without decimal and cents.
	Delimiter	Alpha	1	Delimiter =
39	FinishGoods5	Numeric	9	Fifth finished goods amount without decimal and cents.
	Delimiter	Alpha	1	Delimiter =
40	SuppliesAmount5	Numeric	9	Fifth supplies amount without decimal and cents.
	Delimiter	Alpha	1	Delimiter =
41	UsedCars5	Numeric	9	Fifth used car amount without decimal and cents.
	Delimiter	Alpha	1	Delimiter =
42	PartsSupplies5	Numeric	9	Fifth parts supplies amount without decimal and cents.
	Delimiter	Alpha	1	Delimiter =
43	MerchandiseAmt6	Numeric	9	Sixth merchandise amount without decimal and cents.
	Delimiter	Alpha	1	Delimiter =
44	RawMaterialAmt6	Numeric	9	Sixth raw material amount without decimal and cents.
	Delimiter	Alpha	1	Delimiter =
45	WorkInProcAmt6	Numeric	9	Sixth work in process amount without decimal and cents.
	Delimiter	Alpha	1	Delimiter =
46	FinishGoods6	Numeric	9	Sixth finished goods amount without decimal and cents.
	Delimiter	Alpha	1	Delimiter =
47	SuppliesAmt6	Numeric	9	Sixth supplies amount without decimal and cents.
	Delimiter	Alpha	1	Delimiter =
48	UsedCars6	Numeric	9	Sixth used car amount without decimal and cents.
	Delimiter	Alpha	1	Delimiter =
49	PartsSupplies6	Numeric	9	Sixth parts supplies amount without decimal and cents.
	Delimiter	Alpha	1	Delimiter =
50	MerchandiseAmt7	Numeric	9	Seventh merchandise amount without decimal and cents.
	Delimiter	Alpha	1	Delimiter =
51	RawMaterialAmt7	Numeric	9	Seventh raw material amount without decimal and cents.
	Delimiter	Alpha	1	Delimiter =
52	WorkInProcAmt7	Numeric	9	Seventh work in process amount without decimal and cents.

**EXHIBIT A**  
**LPAO Database Data Layout**

<b>Field#</b>	<b>Name</b>	<b>Type</b>	<b>Length</b>	<b>Description</b>
	Delimiter	Alpha	1	Delimiter =
53	FinishGoods7	Numeric	9	Seventh finished goods amount without decimal and cents.
	Delimiter	Alpha	1	Delimiter =
54	SuppliesAmt7	Numeric	9	Seventh supplies amount without decimal and cents.
	Delimiter	Alpha	1	Delimiter =
55	UsedCars7	Numeric	9	Seventh used car amount without decimal and cents.
	Delimiter	Alpha	1	Delimiter =
56	PartsSupplies7	Numeric	9	Seventh parts supplies amount without decimal and cents.
	Delimiter	Alpha	1	Delimiter =
57	MerchandiseAmt8	Numeric	9	Eighth merchandise amount without decimal and cents.
	Delimiter	Alpha	1	Delimiter =
58	RawMaterialAmt8	Numeric	9	Eighth raw material amount without decimal and cents.
	Delimiter	Alpha	1	Delimiter =
59	WorkInProcAmt8	Numeric	9	Eighth work in process amount without decimal and cents.
	Delimiter	Alpha	1	Delimiter =
60	FinishGoods8	Numeric	9	Eighth finished goods amount without decimal and cents.
	Delimiter	Alpha	1	Delimiter =
61	SuppliesAmt8	Numeric	9	Eighth supplies amount without decimal and cents.
	Delimiter	Alpha	1	Delimiter =
62	UsedCars8	Numeric	9	Eighth used car amount without decimal and cents.
	Delimiter	Alpha	1	Delimiter =
63	PartsSupplies8	Numeric	9	Eighth parts supplies amount without decimal and cents.
	Delimiter	Alpha	1	Delimiter =
64	MerchandiseAmt9	Numeric	9	Ninth merchandise amount without decimal and cents.
	Delimiter	Alpha	1	Delimiter =
65	RawMaterialAmt9	Numeric	9	Ninth raw material amount without decimal and cents.
	Delimiter	Alpha	1	Delimiter =
66	WorkInProcAmt9	Numeric	9	Ninth work in process amount without decimal and cents.
	Delimiter	Alpha	1	Delimiter =

**EXHIBIT A**  
**LPAO Database Data Layout**

<b>Field#</b>	<b>Name</b>	<b>Type</b>	<b>Length</b>	<b>Description</b>
67	FinishGoods9	Numeric	9	Ninth finished goods amount without decimal and cents.
	Delimiter	Alpha	1	Delimiter =
68	SuppliesAmt9	Numeric	9	Ninth supplies amount without decimal and cents.
	Delimiter	Alpha	1	Delimiter =
69	UsedCars9	Numeric	9	Ninth used car amount without decimal and cents.
	Delimiter	Alpha	1	Delimiter =
70	PartsSupplies9	Numeric	9	Ninth parts supplies amount without decimal and cents.
	Delimiter	Alpha	1	Delimiter =
71	Merchandise10	Numeric	9	Tenth merchandise amount without decimal and cents.
	Delimiter	Alpha	1	Delimiter =
72	RawMaterialAmt10	Numeric	9	Tenth raw material amount without decimal and cents.
	Delimiter	Alpha	1	Delimiter =
73	WorkInProcAmt10	Numeric	9	Tenth work in process amount without decimal and cents.
	Delimiter	Alpha	1	Delimiter =
74	FinishGoods10	Numeric	9	Tenth finished goods amount without decimal and cents.
	Delimiter	Alpha	1	Delimiter =
75	SuppliesAmt10	Numeric	9	Tenth supplies amount without decimal and cents.
	Delimiter	Alpha	1	Delimiter =
76	UsedCars10	Numeric	9	Tenth used car amount without decimal and cents.
	Delimiter	Alpha	1	Delimiter =
77	PartsSupplies10	Numeric	9	Tenth parts supplies amount without decimal and cents.
	Delimiter	Alpha	1	Delimiter =
78	MerchandiseAmt11	Numeric	9	Eleventh merchandise amount without decimal and cents.
	Delimiter	Alpha	1	Delimiter =
79	RawMaterialAmt11	Numeric	9	Eleventh raw material amount without decimal and cents.
	Delimiter	Alpha	1	Delimiter =
80	WorkInProcAmt11	Numeric	9	Eleventh work in process amount without decimal and cents.
	Delimiter	Alpha	1	Delimiter =
81	FinishGoods11	Numeric	9	Eleventh finished goods amount without decimal and cents.

**EXHIBIT A  
LPAO Database Data Layout**

Field#	Name	Type	Length	Description
	Delimiter	Alpha	1	Delimiter =
82	SuppliesAmount11	Numeric	9	Eleventh supplies amount without decimal and cents.
	Delimiter	Alpha	1	Delimiter =
83	UsedCars11	Numeric	9	Eleventh used car amount without decimal and cents.
	Delimiter	Alpha	1	Delimiter =
84	PartsSupplies11	Numeric	9	Eleventh parts supplies amount without decimal and cents.
	Delimiter	Alpha	1	Delimiter =
85	MerchandiseAmt12	Numeric	9	Twelfth merchandise amount without decimal and cents.
	Delimiter	Alpha	1	Delimiter =
86	RawMaterialAmt12	Numeric	9	Twelfth raw material amount without decimal and cents.
	Delimiter	Alpha	1	Delimiter =
87	WorkInProcAmt12	Numeric	9	Twelfth work in process amount without decimal and cents.
	Delimiter	Alpha	1	Delimiter =
88	FinishGoods12	Numeric	9	Twelfth finished goods amount without decimal and cents.
	Delimiter	Alpha	1	Delimiter =
89	SuppliesAmt12	Numeric	9	Twelfth supplies amount without decimal and cents.
	Delimiter	Alpha	1	Delimiter =
90	UsedCars12	Numeric	9	Twelfth used car amount without decimal and cents.
	Delimiter	Alpha	1	Delimiter =
91	PartsSupplies12	Numeric	9	Twelfth parts supplies amount without decimal and cents.

Table: Drilling **(TABLE IS NO LONGER USED)**

Key: Assessment Number, Valuation Line Number and Rig Number

Length: 71

Relation: Related to Property Valuation Table with Assessment Number and Valuation Line Number

Fields:

Field#	Name	Type	Length	Description
1	AssessmentNo	Numeric	8	Assessment Number from the Property Valuation Table.

**EXHIBIT A**  
**LPAO Database Data Layout**

Field#	Name	Type	Length	Description
	Delimiter	Alpha	1	Delimiter =
2	DrillValueLineNo	Numeric	2	The Valuation Line Number from the Property Valuation Table.
	Delimiter	Alpha	1	Delimiter =
3	DrillRigNo	Alpha	15	The rig drilling number.
	Delimiter	Alpha	1	Delimiter =
4	DrillRigYr	Numeric	4	Year
	Delimiter	Alpha	1	Delimiter =
5	DrillMaxDepth	Numeric	6	Maximum depth of drilling.
	Delimiter	Alpha	1	Delimiter =
6	DrillAssdValue	Numeric	9	The assessed value of drilling without decimal and cents.
	Delimiter	Alpha	1	Delimiter =
7	DrillOrigAssdValue	Numeric	9	Original assessed value of drilling without decimal and cents.
	Delimiter	Alpha	1	Delimiter =
8	DrillObsolescence	Alpha	1	Obsolescence awarded. Y = Yes; N = No.
	Delimiter	Alpha	1	Delimiter =
9	DrillObolescPercent	Numeric	.2	The obsolescence percent with decimal and 2 positions behind decimal.
	Delimiter	Alpha	1	Delimiter =
10	WorkOver	Alpha	1	Work Over. Y = Yes; N = No.
	Delimiter	Alpha	1	Delimiter =
11	WorkOverDaysWork	Numeric	3	Number of days worked.

Table: Pipelines (**TABLE IS NO LONGER USED**)

Key: Assessment Number, Valuation Line Number and Sequence Number

Length: 54

Relation: Related to Property Valuation Table with Assessment Number and Valuation Line Number

Fields:

Field#	Name	Type	Length	Description
1	AssessmentNo	Numeric	8	Assessment Number from the Property Valuation Table.
	Delimiter	Alpha	1	Delimiter =
2	PipelnValueLineNo	Numeric	2	The Valuation Line Number from the Property Valuation Table.

**EXHIBIT A**  
**LPAO Database Data Layout**

Field#	Name	Type	Length	Description
	Delimiter	Alpha	1	Delimiter =
3	PipelnSequenceNo	Numeric	4	The sequence number of the occurrence of the pipeline within the Property Valuation.
	Delimiter	Alpha	1	Delimiter =
4	PipelnCode	Numeric	4	Pipeline code.
	Delimiter	Alpha	1	Delimiter =
5	PipelnMiles	Numeric	4.2	Miles of pipeline with decimal and 2 digits behind the decimal.
	Delimiter	Alpha	1	Delimiter =
6	PipelnAssdValue	Numeric	9	Assessed value of the pipeline without decimal and cents.
	Delimiter	Alpha	1	Delimiter =
7	PipelnOrigAssdValue	Numeric	9	Original assessed value of the pipeline without decimal and cents.
	Delimiter	Alpha	1	Delimiter =
8	PipelnObsolescence	Alpha	1	Obsolescence awarded. Y = Yes; N = No.
	Delimiter	Alpha	1	Delimiter =
9	PipelnObsolescPercent	Numeric	.2	The obsolescence percent with decimal and 2 positions behind decimal.

Table: Wells (**TABLE IS NO LONGER USED**)

Key: Assessment Number, Valuation Line Number and Serial Number

Length: 61

Relation: Related to Property Valuation Table with Assessment Number and Valuation Line Number

Fields:

Field#	Name	Type	Length	Description
1	AssessmentNo	Numeric	8	Assessment Number from the Property Valuation Table.
	Delimiter	Alpha	1	Delimiter =
2	WellValueLineNo	Numeric	2	The Valuation Line Number from the Property Valuation Table.
	Delimiter	Alpha	1	Delimiter =
3	WellSerialNo	Alpha	15	Well serial number.
	Delimiter	Alpha	1	Delimiter =
4	WellDepth	Numeric	7	The depth of the well.
	Delimiter	Alpha	1	Delimiter =

**EXHIBIT A  
LPAO Database Data Layout**

Field#	Name	Type	Length	Description
5	WellAssdValue	Numeric	9	Assessed value of well without decimal and cents.
	Delimiter	Alpha	1	Delimiter =
6	WellOrigAssdValue	Numeric	9	Original assessed value of well without decimal and cents.
	Delimiter	Alpha	1	Delimiter =
7	WellObsolescence	Alpha	1	Obsolescence awarded. Y = Yes; N = No.
	Delimiter	Alpha	1	Delimiter =
8	WellObsolescPercent	Numeric	.2	The obsolescence percent with decimal and 2 positions behind decimal.

Table: Tanks (**TABLE IS NO LONGER USED**)

Key: Assessment Number, Valuation Line Number and Sequence Number

Length: 59

Relation: Related to Property Valuation Table with Assessment Number and Valuation Line Number

Fields:

Field#	Name	Type	Length	Description
1	AssessmentNo	Numeric	8	Assessment Number from the Property Valuation Table.
	Delimiter	Alpha	1	Delimiter =
2	TankValueLineNo	Numeric	2	The Valuation Line Number from the Property Valuation Table.
	Delimiter	Alpha	1	Delimiter =
3	TankSequenceNo	Numeric	4	The sequence number of the occurrence of tank within the Property Valuation.
	Delimiter	Alpha	1	Delimiter =
4	TankOTCode	Numeric	4	OT code of tank.
	Delimiter	Alpha	1	Delimiter =
5	TankQuantity	Numeric	5	Quantity of tank.
	Delimiter	Alpha	1	Delimiter =
6	TankBarrels	Numeric	5	Number of barrels.
	Delimiter	Alpha	1	Delimiter
7	TankAssdValue	Numeric	9	Assessed value of tank without decimal and cents.
	Delimiter	Alpha	1	Delimiter =

**EXHIBIT A**  
**LPAO Database Data Layout**

Field#	Name	Type	Length	Description
8	TankOrigAssdValue	Numeric	9	Original assessed value of tank without decimal and cents.
	Delimiter	Alpha	1	Delimiter =
9	TankObsolescence	Alpha	1	Obsolescence awarded. Y = Yes; N = No.
	Delimiter	Alpha	1	Delimiter =
10	TankObsolescPercent	Numeric	.2	The obsolescence percent with decimal and 2 positions behind decimal.

Table: Oil (**TABLE IS NO LONGER USED**)

Key: Assessment Number, Valuation Line Number and Sequence Number

Length: 54

Relation: Related to Property Valuation Table with Assessment Number and Valuation Line Number

Fields:

Field#	Name	Type	Length	Description
1	AssessmentNo	Numeric	8	Assessment Number from the Property Valuation Table.
	Delimiter	Alpha	1	Delimiter =
2	OilValueLineNo	Numeric	2	The Valuation Line Number from the Property Valuation Table.
	Delimiter	Alpha	1	Delimiter =
3	OilSequenceNo	Numeric	4	The sequence number of the occurrence of the oil inventory within the Property Valuation.
	Delimiter	Alpha	1	Delimiter =
4	OilOICode	Numeric	4	OI code of the oil inventory.
	Delimiter	Alpha	1	Delimiter =
5	OilQuantity	Numeric	6	Quantity of oil inventory.
	Delimiter	Alpha	1	Delimiter =
6	OilAssdValue	Numeric	9	Assessed value of oil inventory without decimal and cents.
	Delimiter	Alpha	1	Delimiter =
7	OilOrigAssdValue	Numeric	9	Original assessed value of oil inventory without decimal and cents.
	Delimiter	Alpha	1	Delimiter =
8	OilObsolescence	Alpha	1	Obsolescence awarded. Y = Yes; N = No.

**EXHIBIT A**  
**LPAO Database Data Layout**

Field#	Name	Type	Length	Description
	Delimiter	Alpha	1	Delimiter =
9	OilObsolescPercent	Numeric	.2	The obsolescence percent with decimal and 2 positions behind decimal.

Table: Lease Name (**TABLE IS NO LONGER USED**)

Key: Assessment Number, Valuation Line Number and Sequence Number

Length: 72

Relation: Related to Property Valuation Table with Assessment Number and Valuation Line Number

Fields:

Field#	Name	Type	Length	Description
1	AssessmentNo	Numeric	8	Assessment Number from the Property Valuation Table.
	Delimiter	Alpha	1	Delimiter =
2	LeaseNmValueLineNo	Numeric	2	The Valuation Line Number from the Property Valuation Table.
	Delimiter	Alpha	1	Delimiter =
3	LeaseNmSequenceNo	Numeric	4	The sequence number of the occurrence of the lease name within the Property Valuation.
	Delimiter	Alpha	1	Delimiter =
4	LeaseNmAssdValue	Numeric	9	Assessed value of lease name without decimal and cents.
	Delimiter	Alpha	1	Delimiter =
5	LeaseNmOrigAssdValue	Numeric	9	Original assessed value of lease name without decimal and cents.
	Delimiter	Alpha	1	Delimiter =
6	LeaseNmLesseeName	Alpha	35	Name of lessee.

**EXHIBIT A**  
**LPAO Database Data Layout**

**Total records within each table as of March 6, 2002:**

<u>TABLE</u>	<u>RECORDS</u>
Assessment Table	93,704
Owners Table	147,940
Subdivisions Table	90,987
Property Descriptions Table	211,745
Township Ranges Table	26,958
Form Table	55,442
Other Charges Table	313
Previous Property Valuations Table	337,058
Previous Owners Table	99,951
Comments Table	236052
Property Valuations Table	173,735
Moveable Table	158,789
Gathering Table	48
Lease Table	1
Merchandise Table	3,028
Drilling Table	0
Pipelines Table	0
Wells Table	0
Tanks Table	0
Oil Table	0
Lease Name Table	0